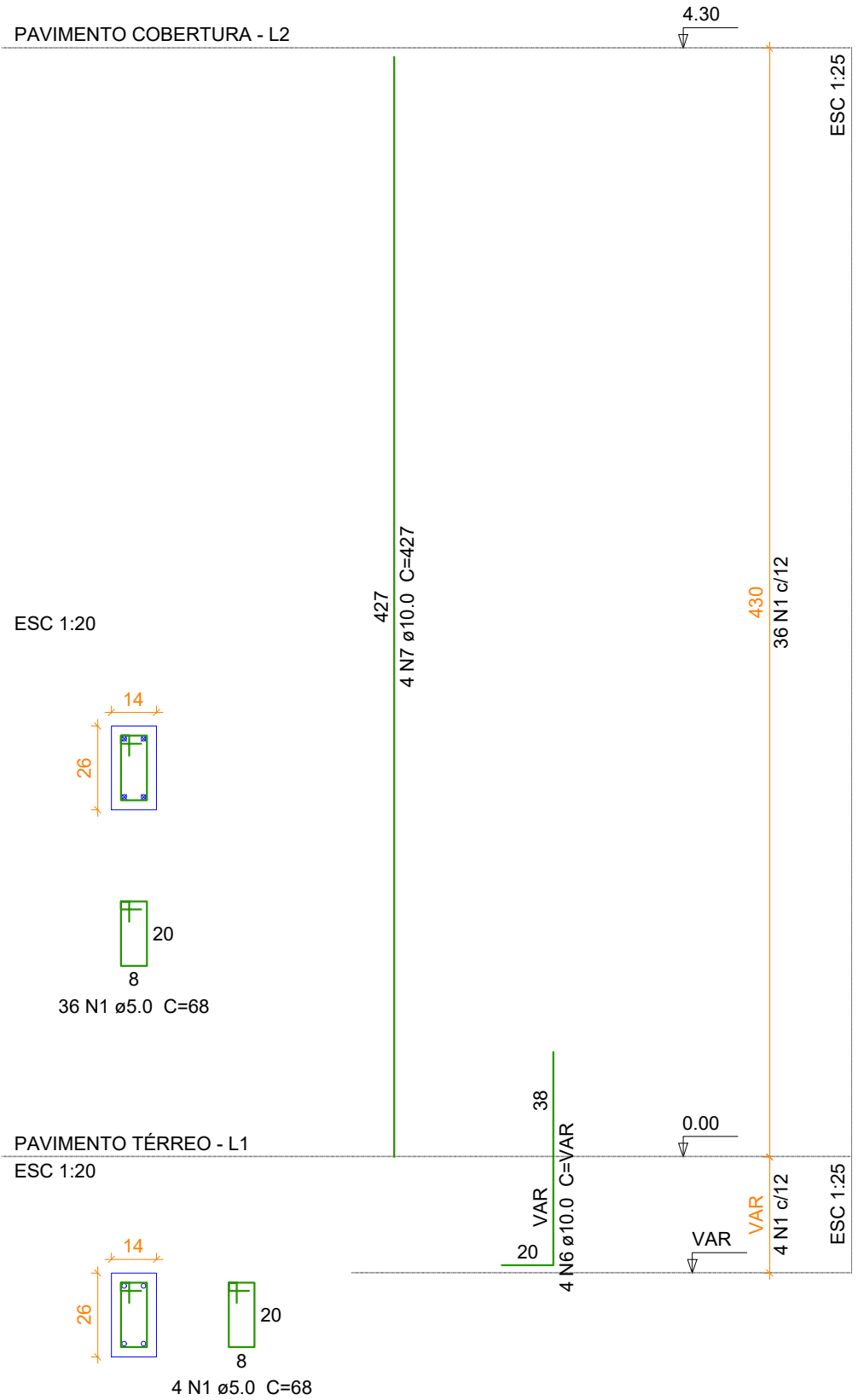
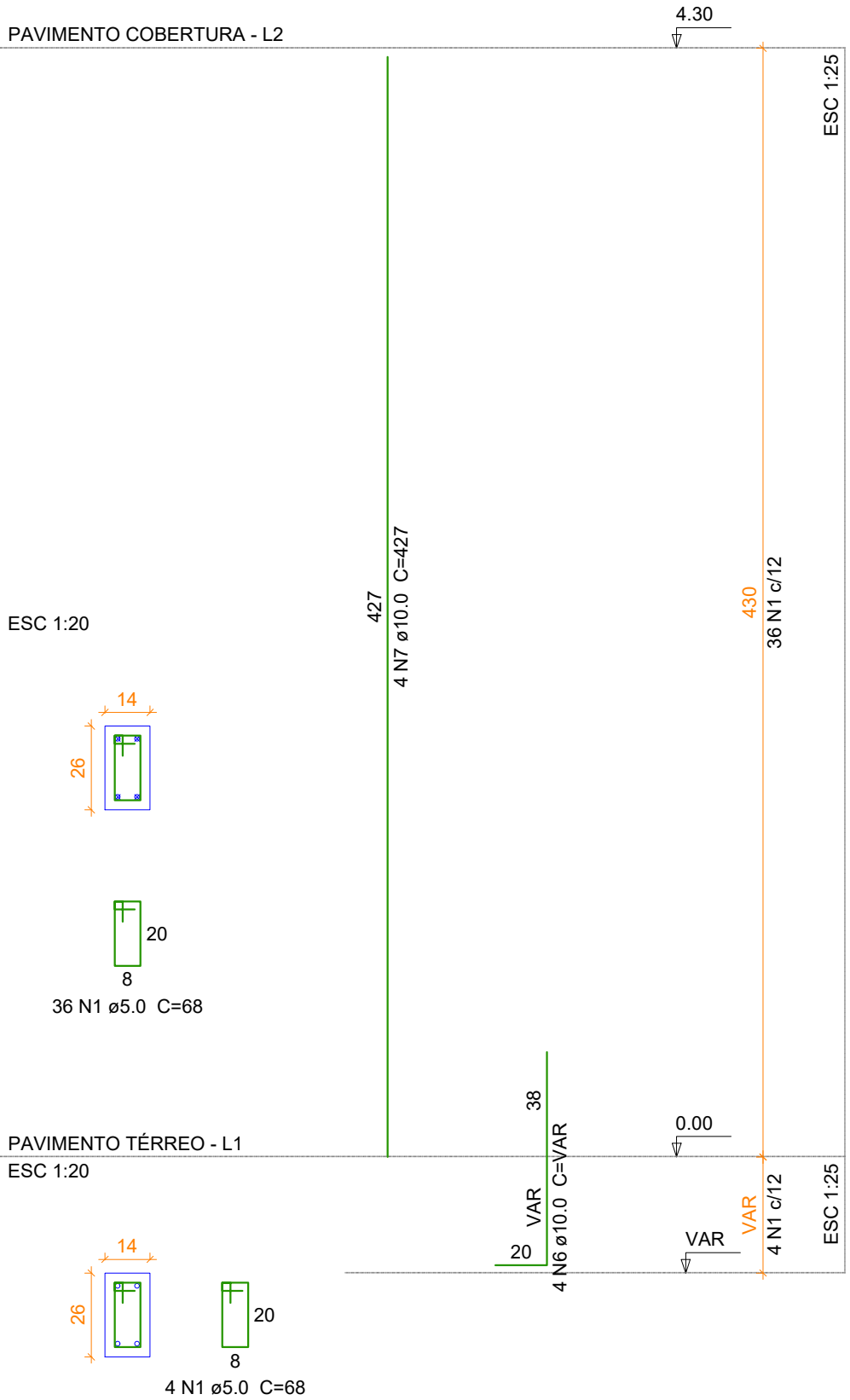


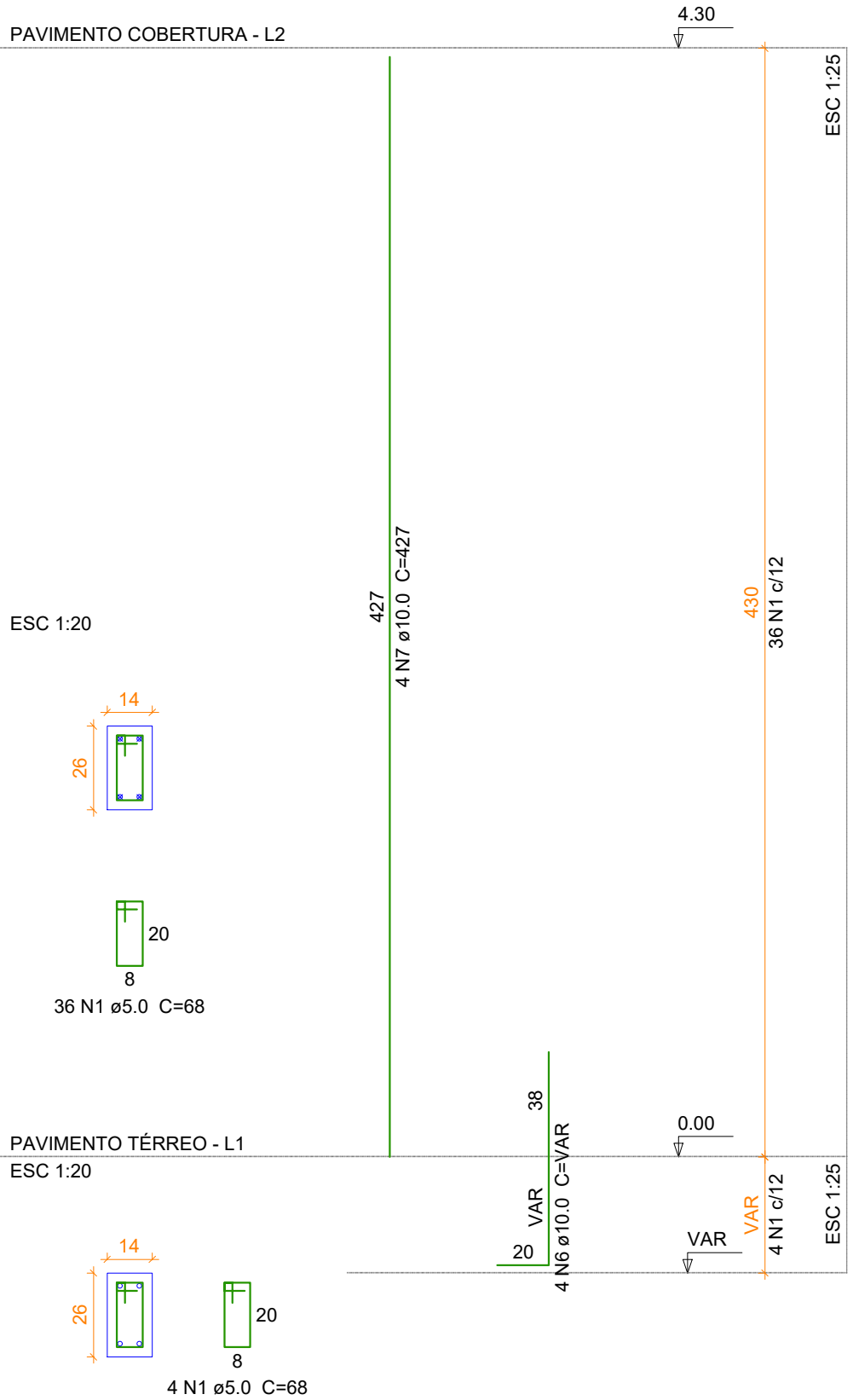
P1



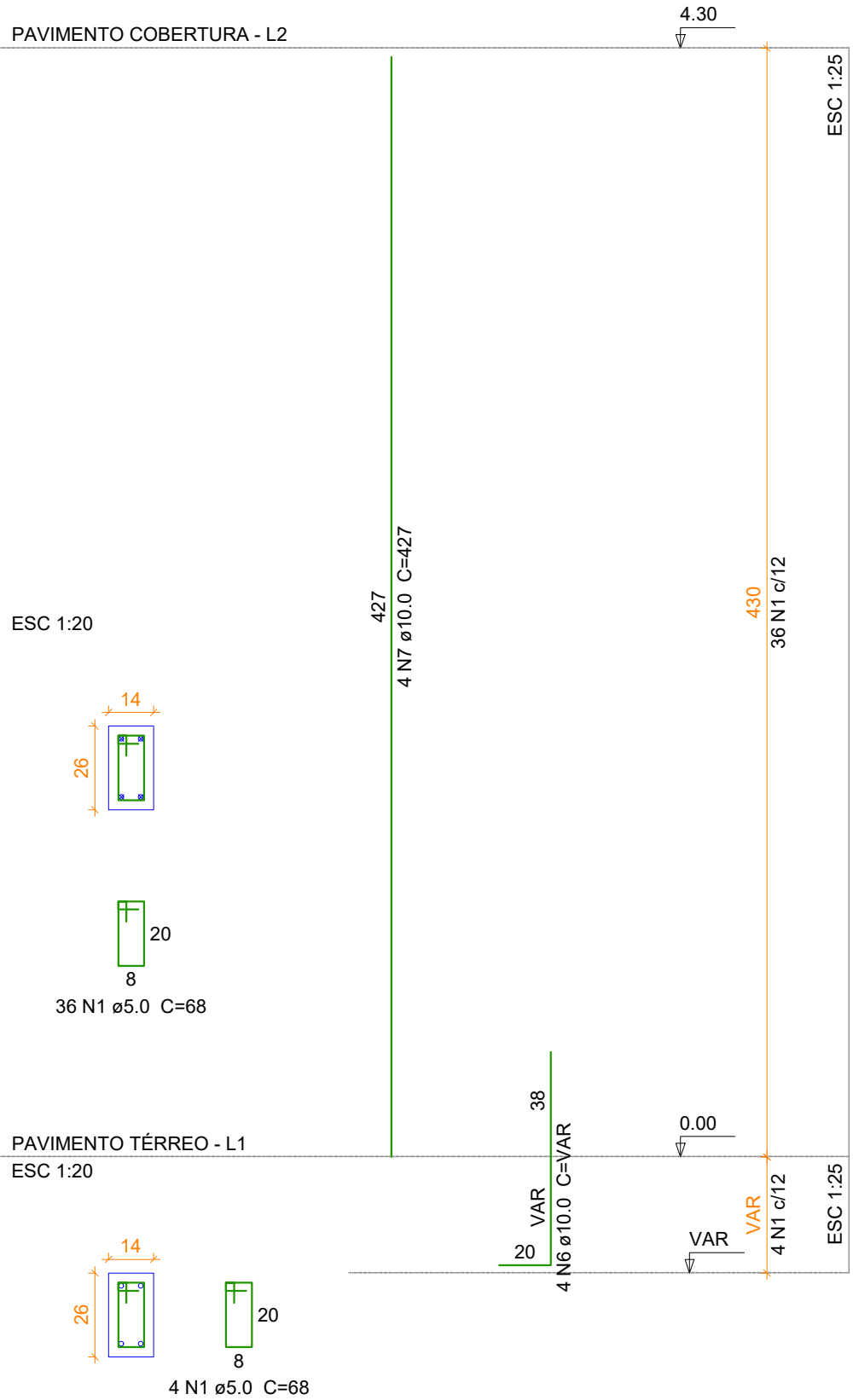
P2



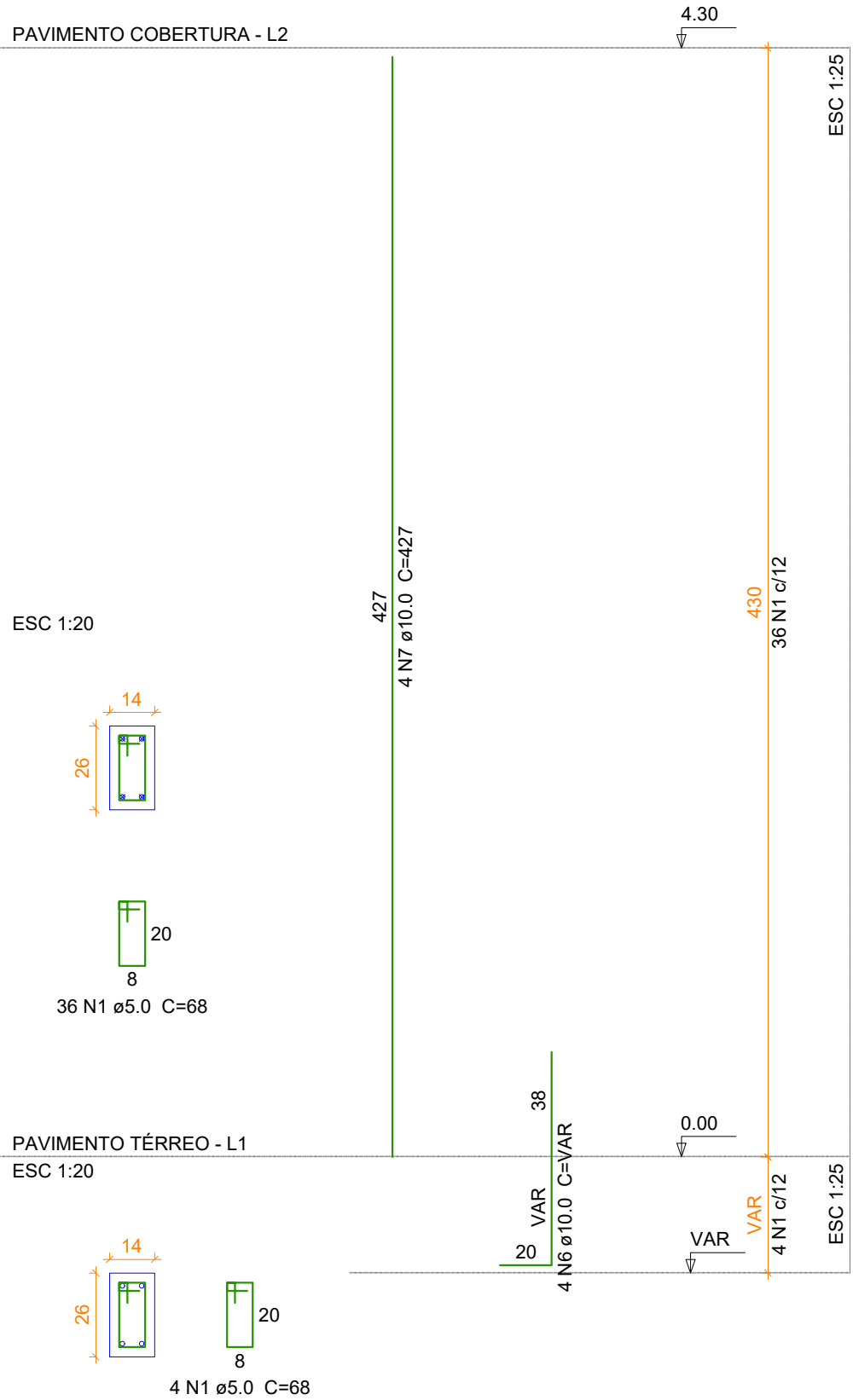
P3



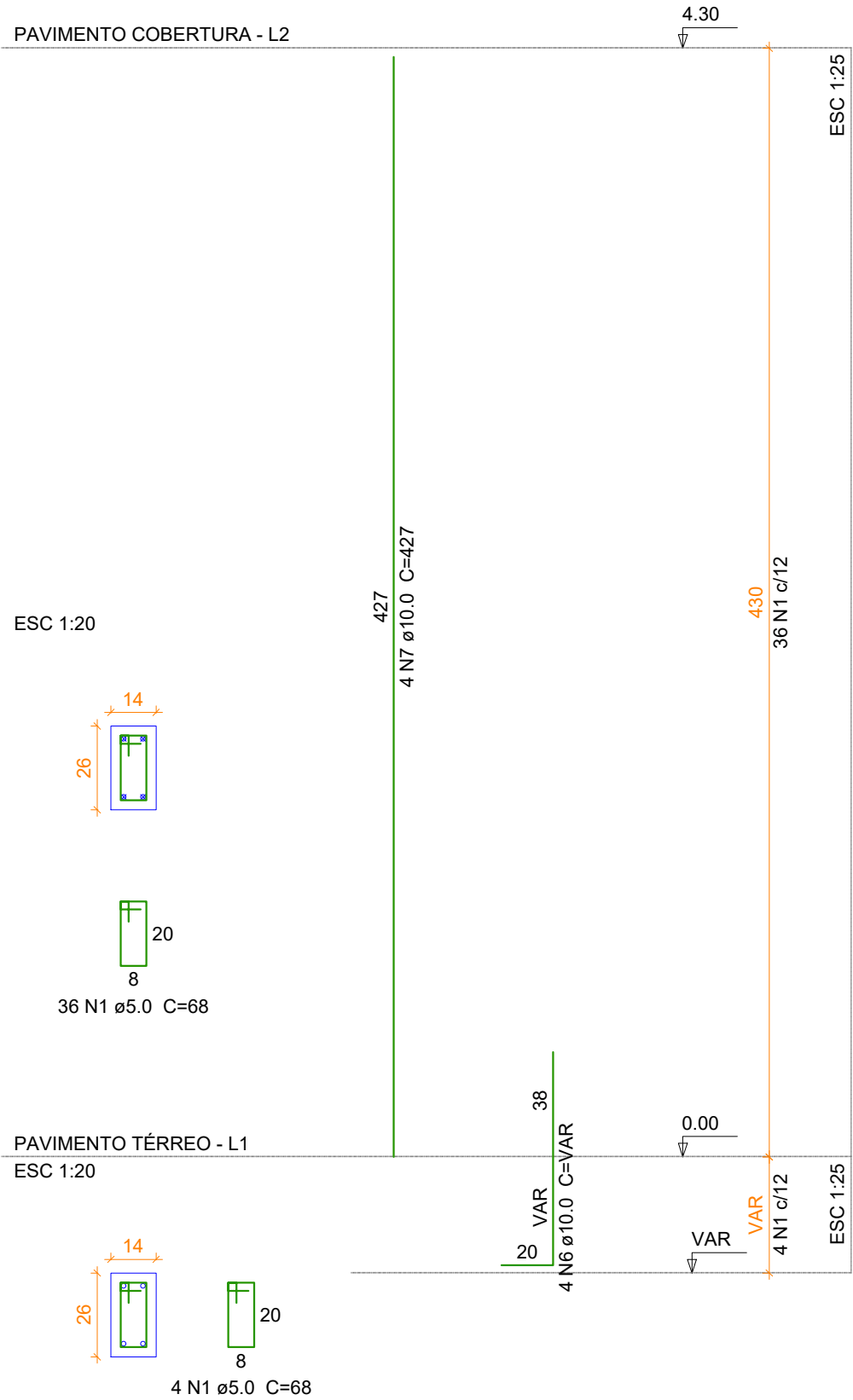
P4



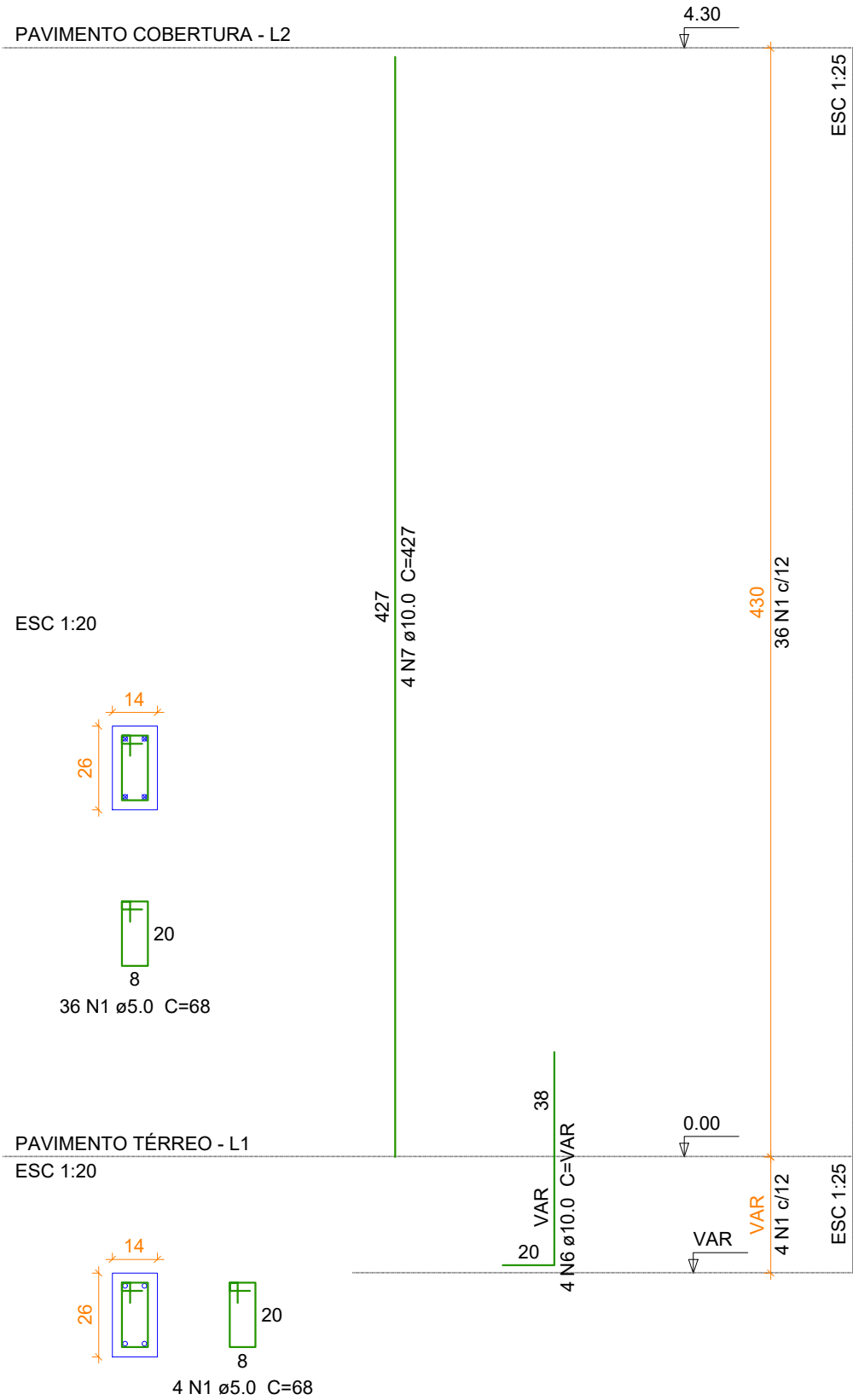
P5



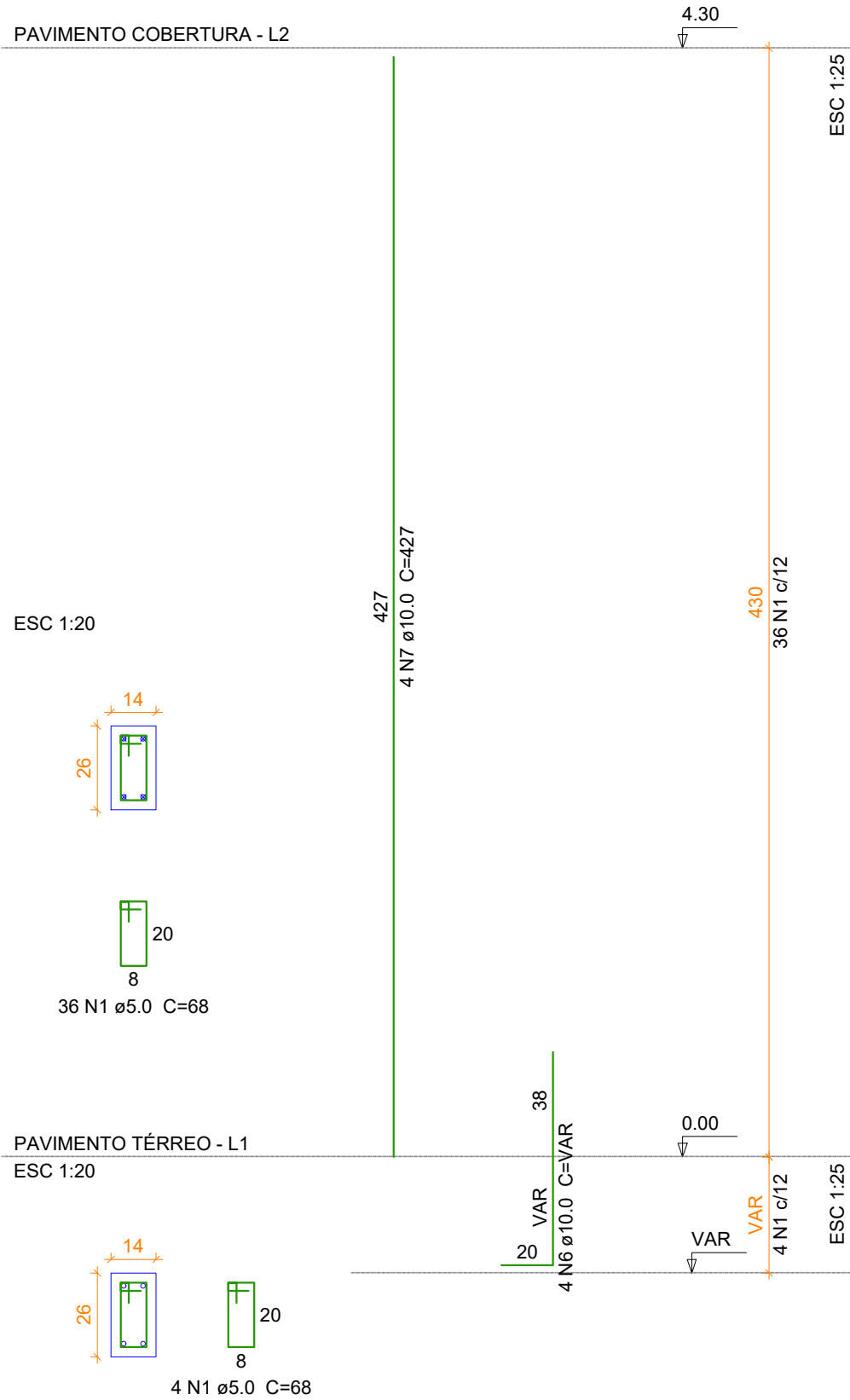
P6



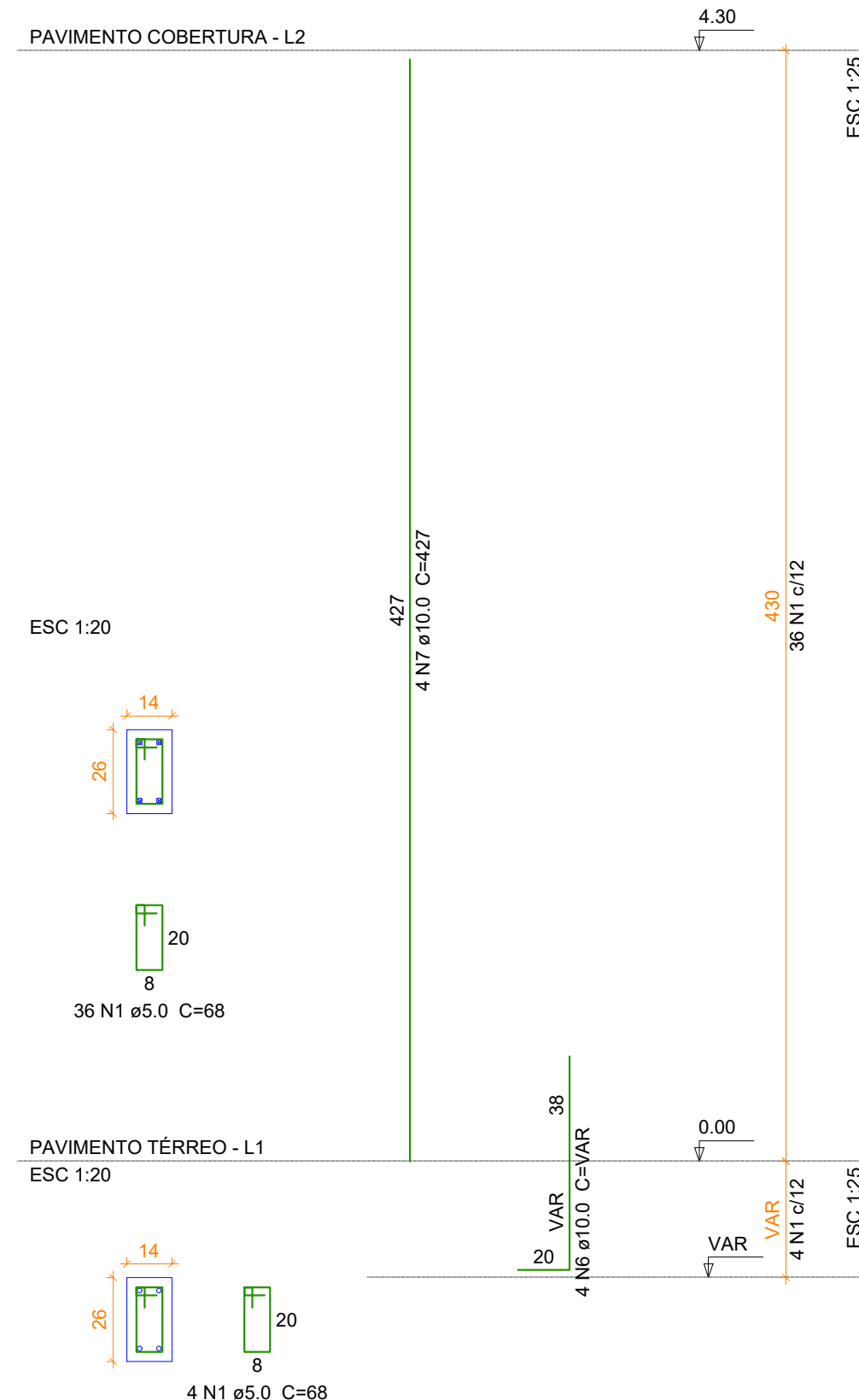
P7



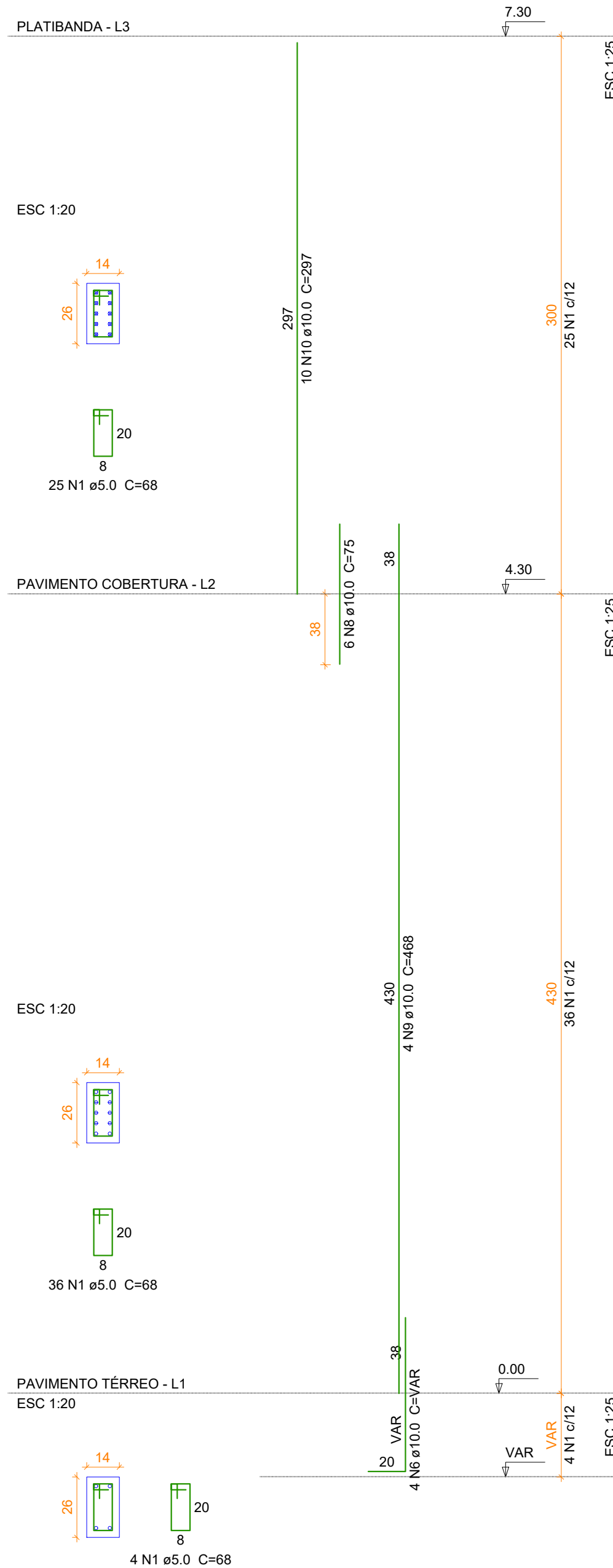
P8



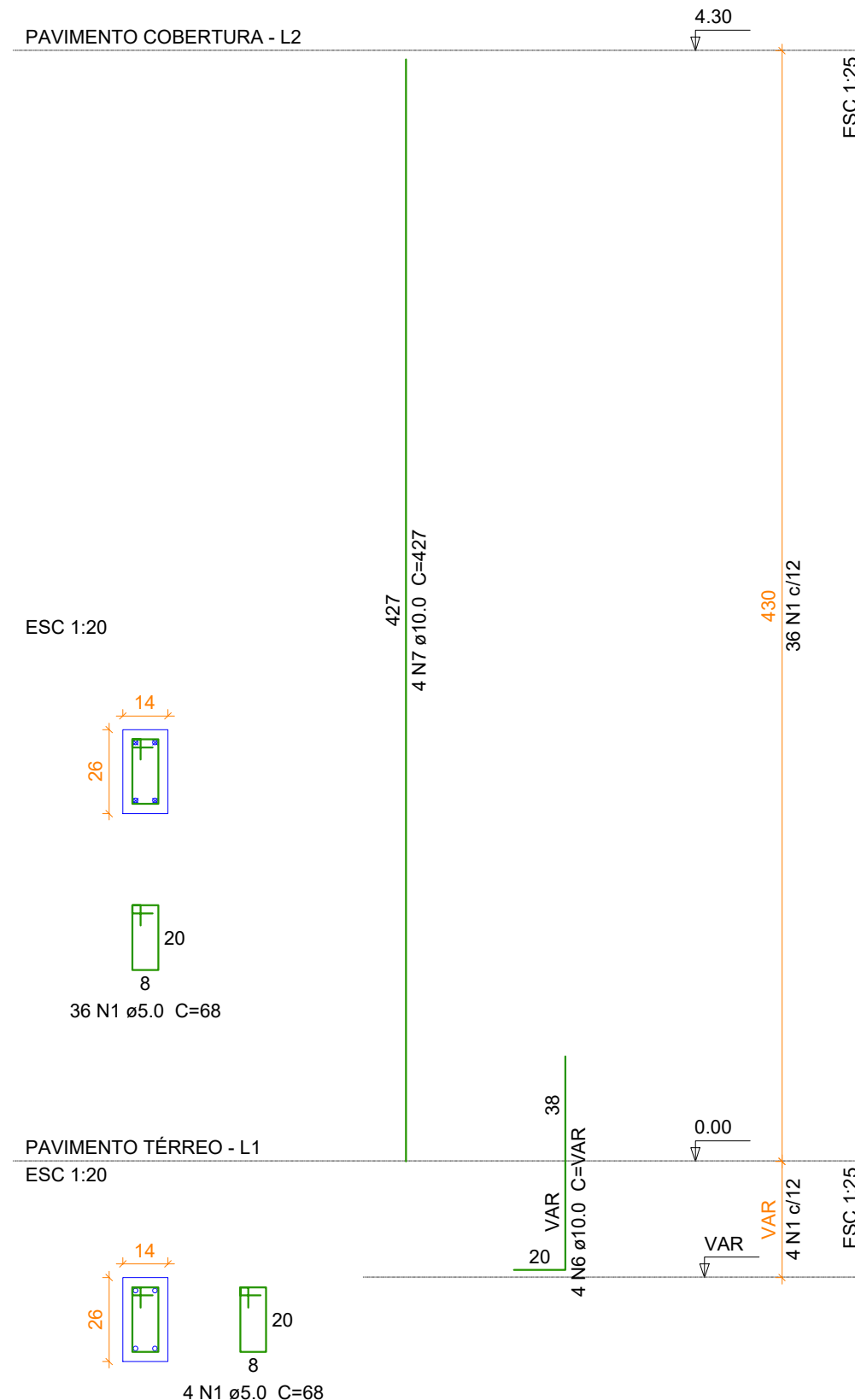
P9



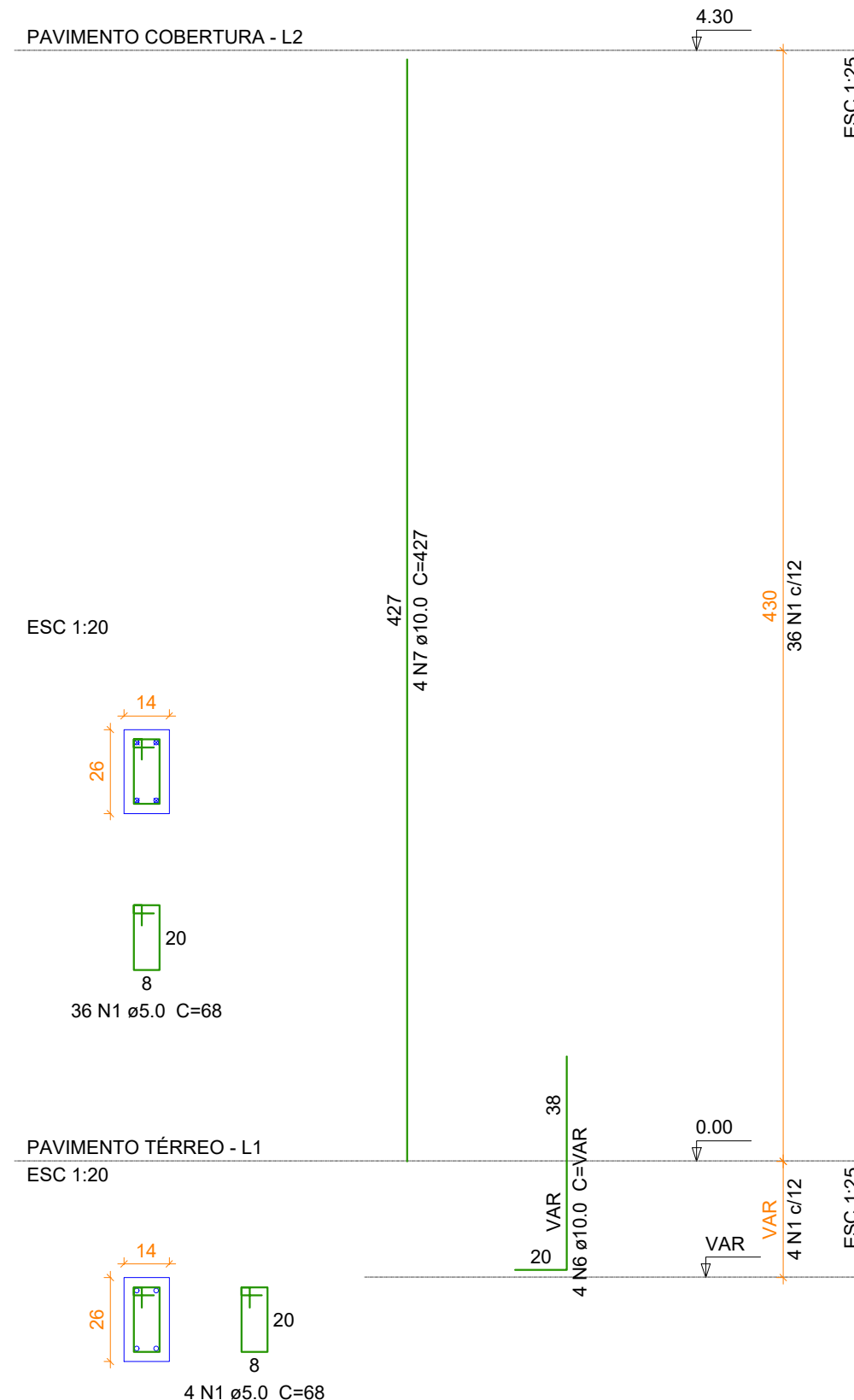
P10



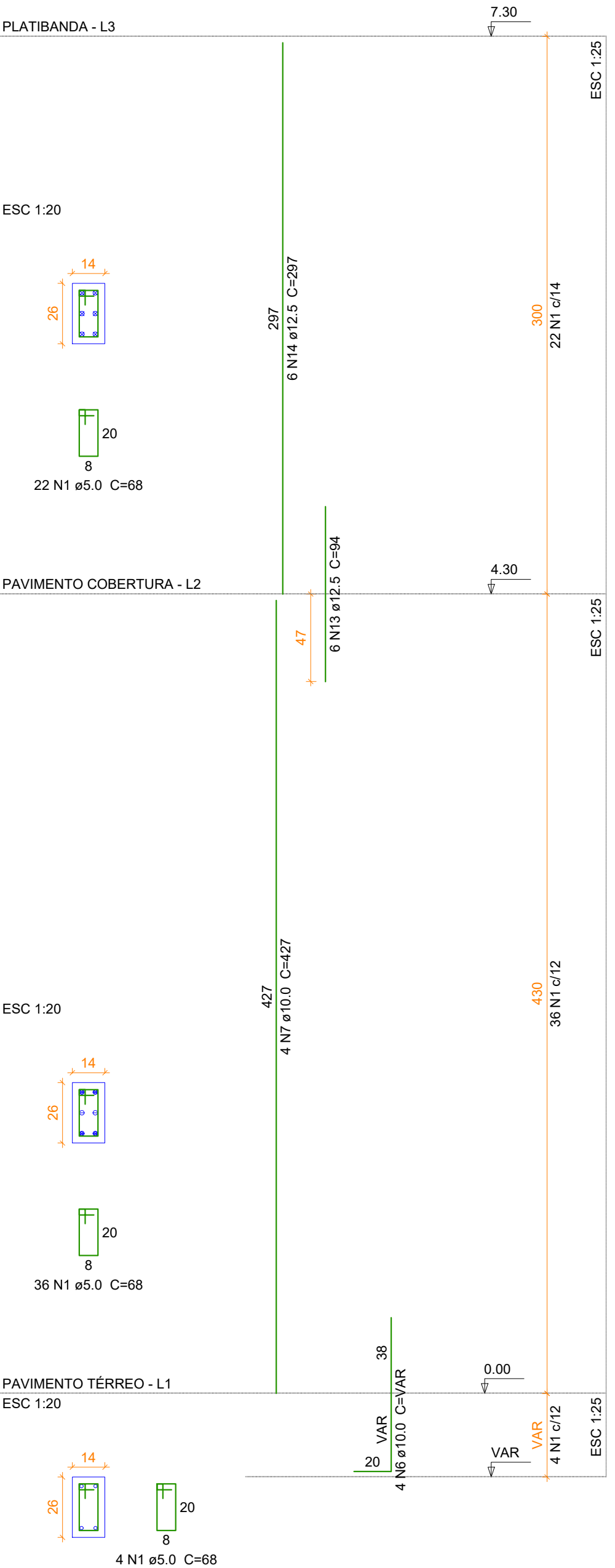
P11



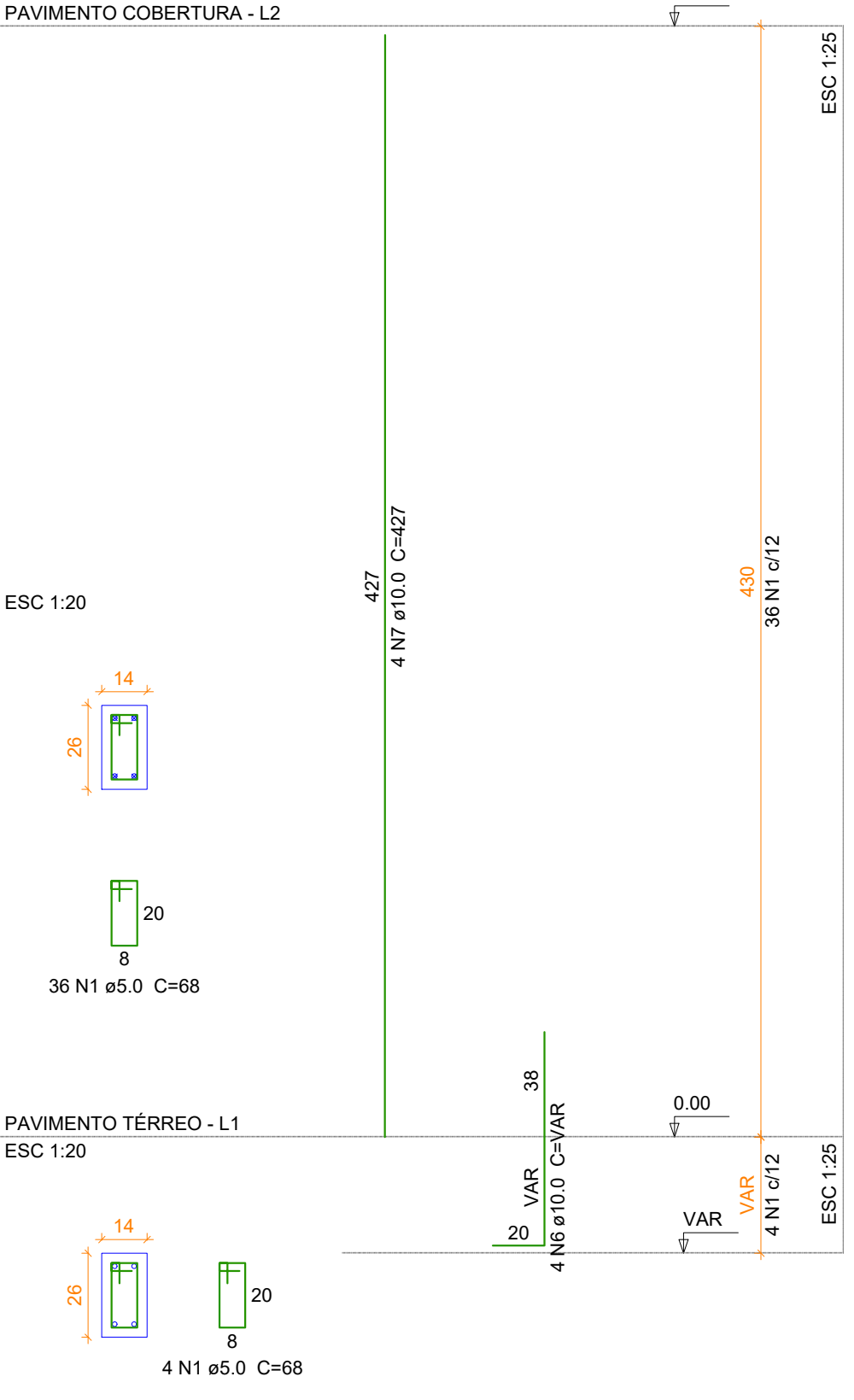
P12



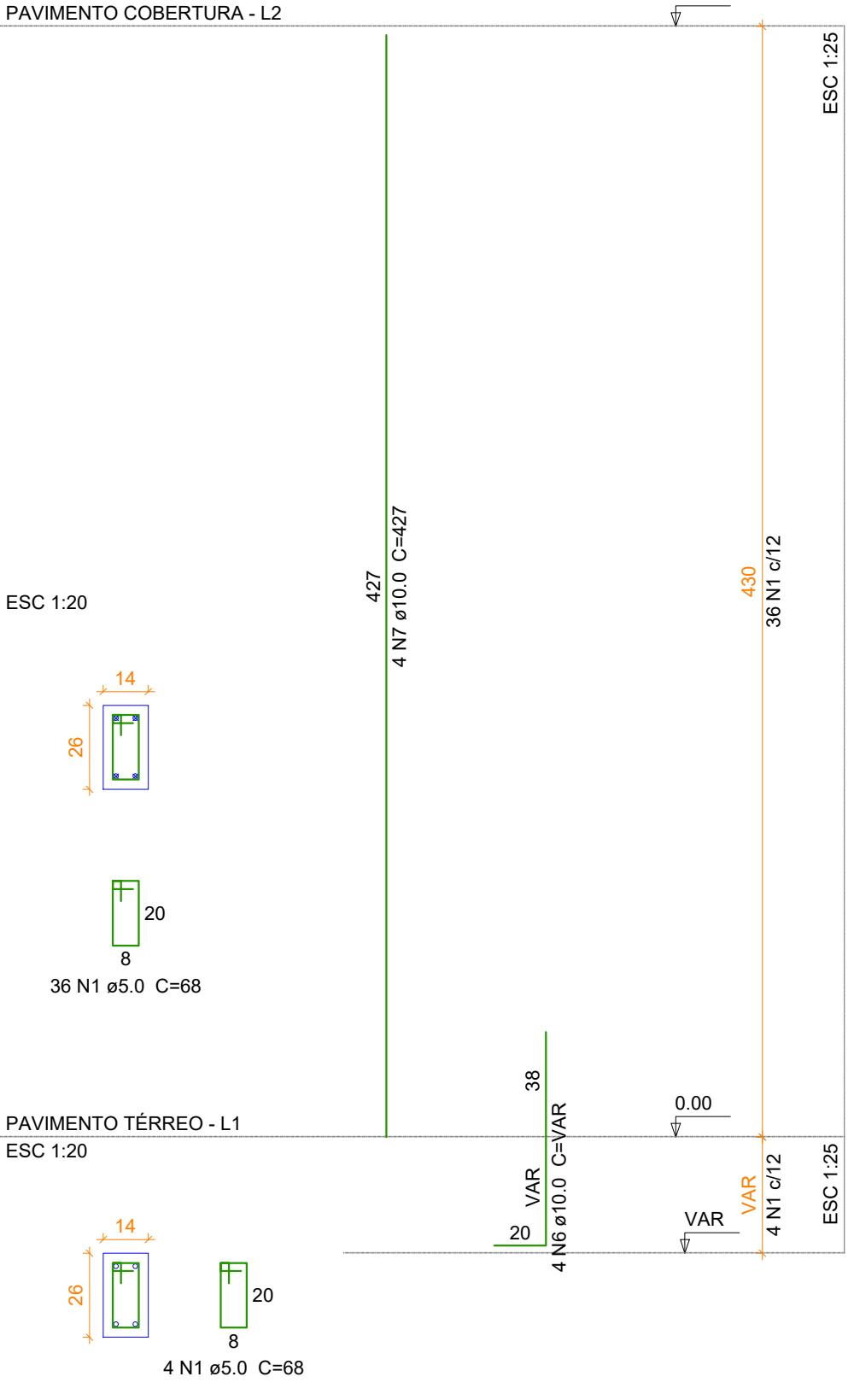
P13



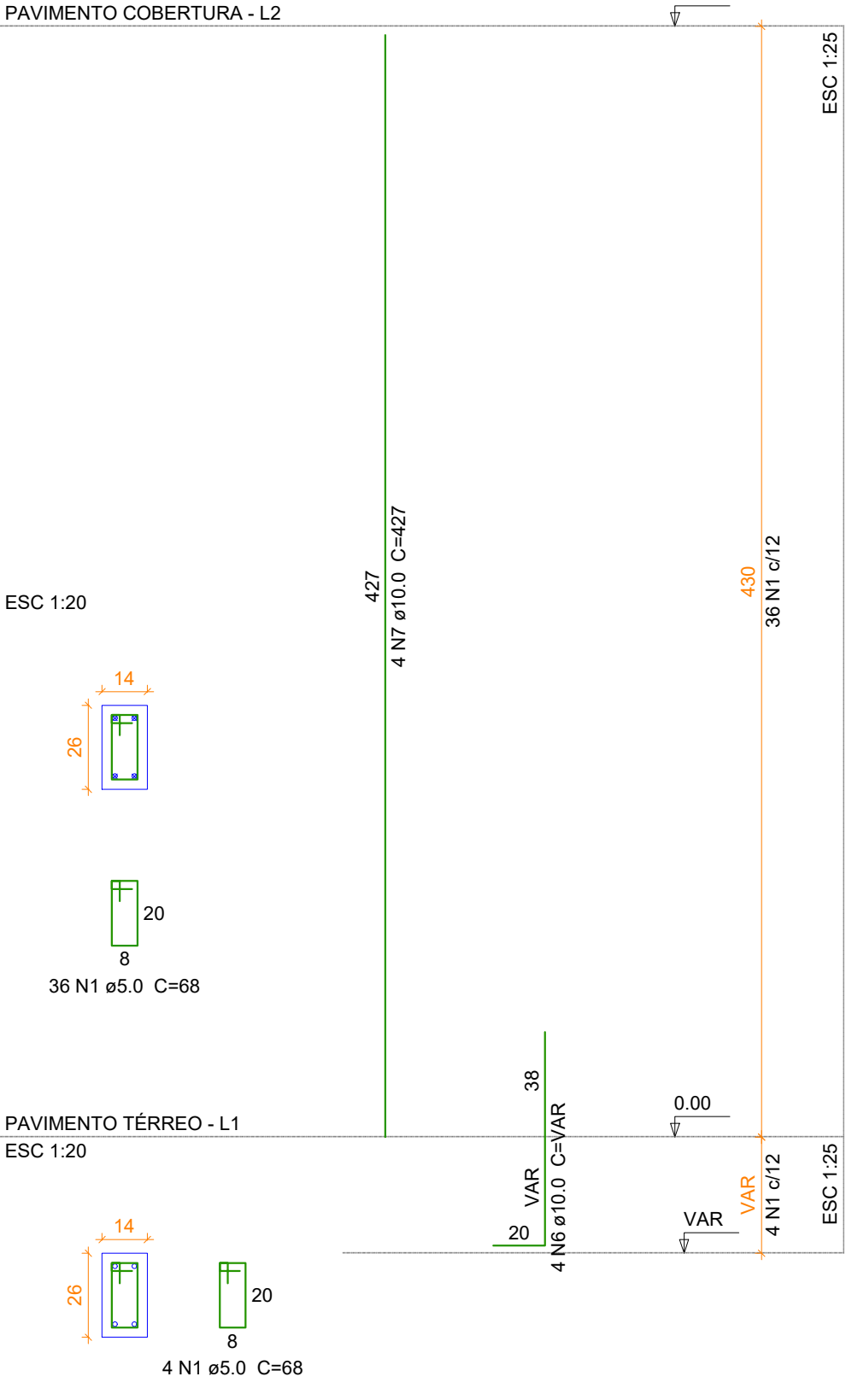
P14



P15



P16



Relação do aço

P1	P2	P3
P4	P5	P6
P7	P8	P9
P10	P11	P12
P13	P14	P15
P16	P17	P18
P19	P20	P21
P22	P23	P24
P25	P26	P27
P28	P29	P30
P31	P32	P33
P34	P35	P36
P38	P39	P40
P41	P42	P43
P44	P45	P46
P47	P48	P49
P50	P51	P52
P53	P54	P55
P56	P57	P58
P59	P60	P61
P62	P63	P64
P65	P66	P67
P68	P69	P70
P71		

Resumo do aço

AÇO	N	DIAM	C.TOTAL	PESO * 10 %
		(mm)	(m)	(kg)
CA50	1	5.0	1774	68
	2	5.0	940	98
	3	5.0	40	108
	4	5.0	60	34
	5	5.0	160	86
	6	10.0	196	VAR
	7	10.0	236	427
	8	10.0	16	75
	9	10.0	9	405
	10	10.0	22	297
	11	10.0	40	82
	12	10.0	86	VAR
	13	12.5	12	94
	14	12.5	12	297
PESO TOTAL				347.1

Vol. de concreto total (C-25) = 15.02 m³  
Área de forma total = 277.24 m²

PROJETO ESTRUTURAL



PREFEITURA MUNICIPAL  
TRÊS BARRAS DO PARANÁ

UBRA

REFORMA E AMPLIAÇÃO DO CENTRO DE EVENTOS - SALÃO

PRESIDENTE  
TRÊS BARRAS DO PARANÁ

DESENVOLVIDOR  
CAMILA THEISEN

CONTEÚDO  
PRUMADA DE PILARES - 01 ao 16

DATA  
JULHO/2025

PROPOSTA  
PREFEITURA MUNICIPAL DE TRÊS BARRAS DO PARANÁ

PÁGINA  
14/18